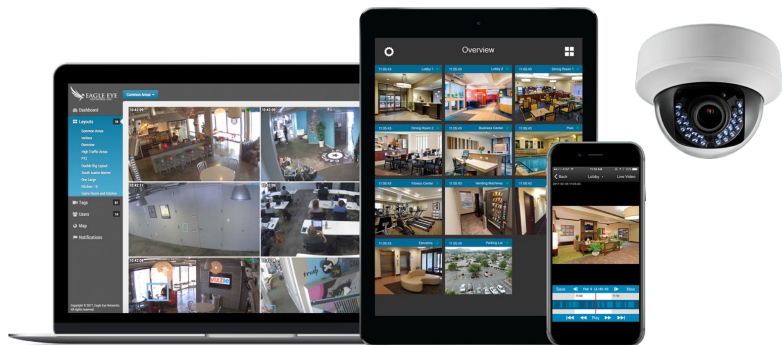




## Cloud Based Video Surveillance

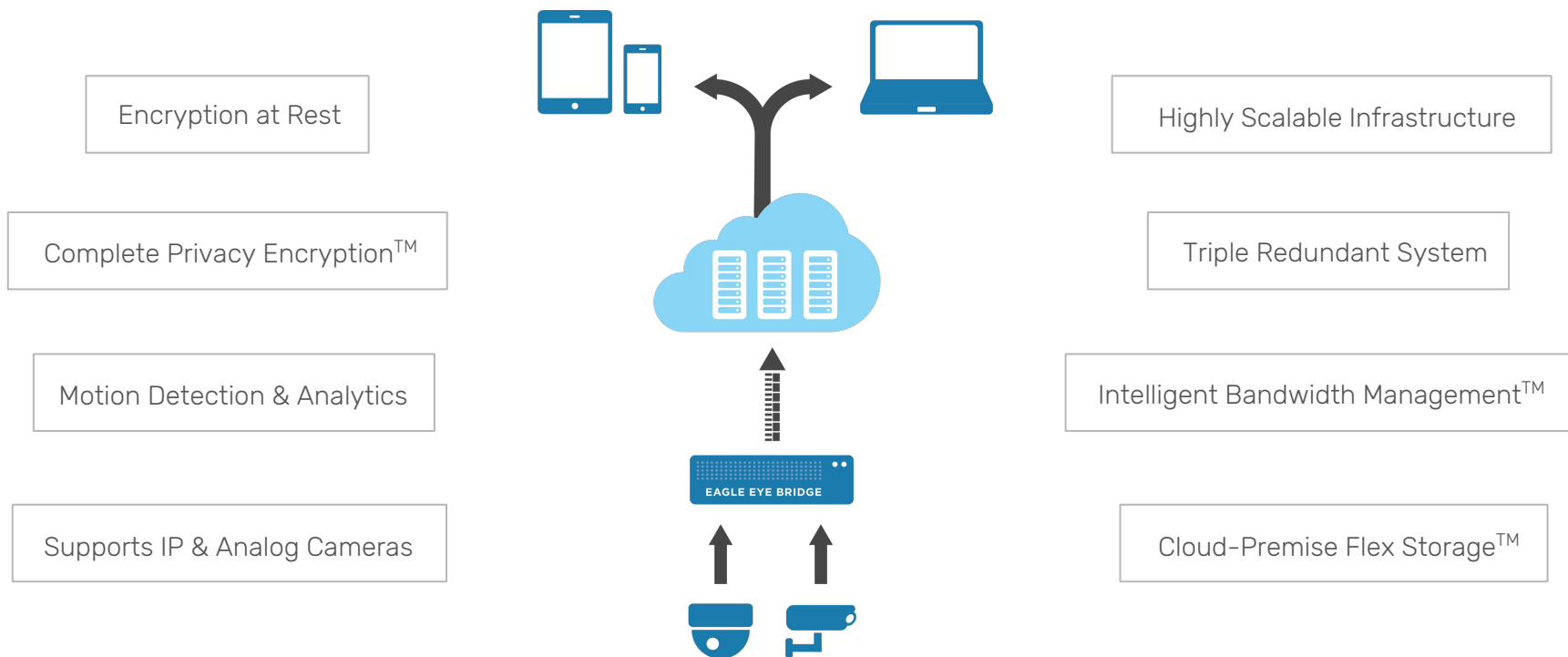


- Sharing video footage is a breeze with offsite cloud backup
- View multiple locations on a single screen
- Your video is always in your pocket with our awesome iOS and Android apps
- Plug and play with your existing cameras

## Company Overview

- Founded in 2012 by Dean Drako
  - Founder & Former President/CEO of Barracuda Networks
- Global manufacturer of multiple cloud surveillance systems
- 2 Headquarters: Austin, TX and Amsterdam, NL
- Channel of 850 resellers globally
- Customers in 48 countries
- Acquired Panasonic CameraManager in July 2017

# Next Generation Cloud VMS



## Powerful, Yet Easy to Use



Ensure brand excellence



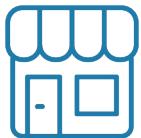
Motion alerts and analytics for key events in your stores



Increase upsell opportunities



Simply share video with HR, police, or your management team

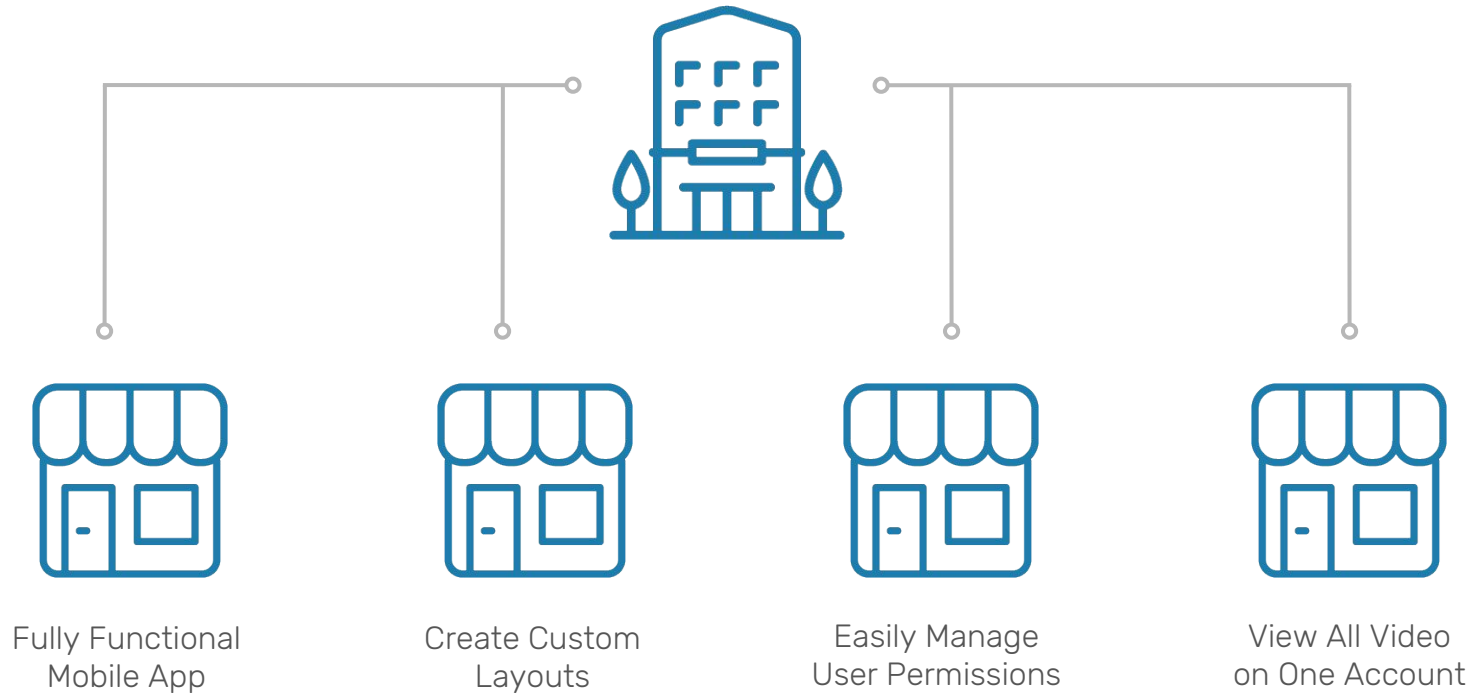


View cash registers from multiple locations on a single screen

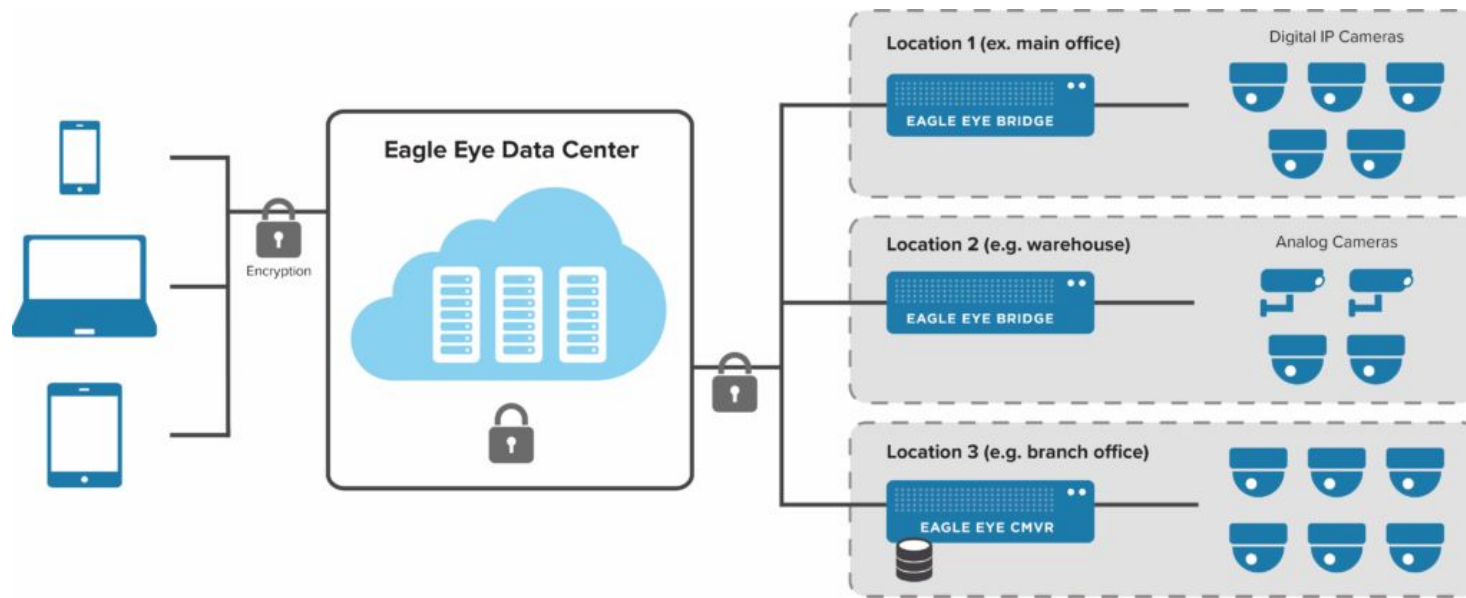


Unlimited users means more eyes on your stores

# Great for Managing Multiple Locations



# Deployment in Multiple Locations

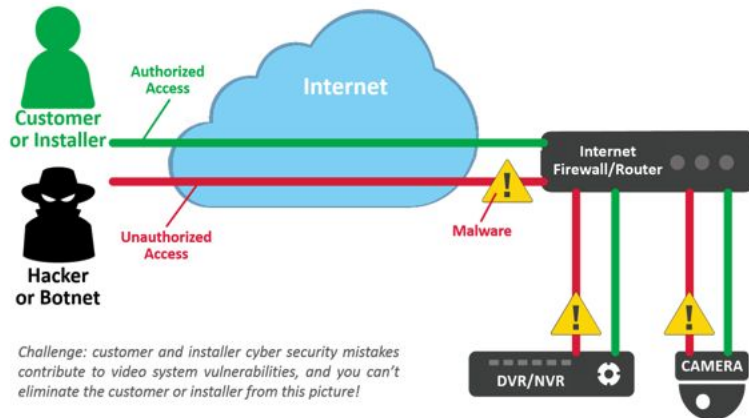


# Brands Trust Eagle Eye Networks



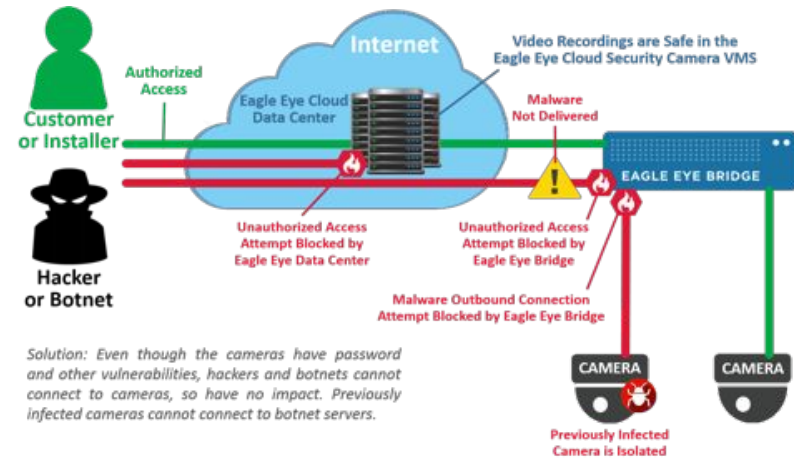
# Cyber Secure Solution

## Traditional DVR/NVR Solution



*Challenge: customer and installer cyber security mistakes contribute to video system vulnerabilities, and you can't eliminate the customer or installer from this picture!*

## Eagle Eye Networks Solution



*Solution: Even though the cameras have password and other vulnerabilities, hackers and botnets cannot connect to cameras, so have no impact. Previously infected cameras cannot connect to botnet servers.*





## Onsite Hardware



- 
- Eagle Eye Bridges
  - Eagle Eye CMVRs
  - Managed PoE Switches

Data Sheets are available on our [Website](#).

# Eagle Eye Bridges



- Stores video in the Eagle Eye Cloud Data Center
- Receives and analyzes video streams from your cameras
- Provides onsite buffering for bandwidth management
- Detects and notifies you of any camera issues
- Automatically transmits camera and system status information to the Eagle Eye Cloud Data Center

## Compact Bridges

---

- Eagle Eye Bridge 304
- Eagle Eye Bridge 304s (SSD Storage)
- Eagle Eye Bridge 304w (WiFi Capabilities)
- Eagle Eye Bridge 305
- Eagle Eye Bridge 305s (SSD Storage)

## Rack Bridges

---

- Eagle Eye Bridge 301
- Eagle Eye Bridge 401
- Eagle Eye Bridge 303
- Eagle Eye Bridge 403
- Eagle Eye Bridge 310
- Eagle Eye Bridge 410

# Eagle Eye CMVRs



- Stores video onsite **and/or** in the Eagle Eye Cloud Data Center
- Receives and analyzes video streams from your cameras
- Provides onsite buffering for bandwidth management
- Detects and notifies you of any camera issues
- Automatically transmits camera and system status information to the Eagle Eye Cloud Data Center

## Compact CMVRs

---

- Eagle Eye CMVR 224
- Eagle Eye CMVR 324

## Rack CMVRs

---

- Eagle Eye CMVR 320
- Eagle Eye CMVR 420
- Eagle Eye CMVR 330
- Eagle Eye CMVR 430

## Enterprise CMVRs

---

- Eagle Eye CMVR 520
- Eagle Eye CMVR 620
- Eagle Eye CMVR 820

# Bridges vs. CMVRs

Which one will work best for your project?

## Bridges

- Stores video in the cloud
- Buffers video onsite until proper bandwidth is available
- Wide variety of options based on size, storage, camera type and count, and temperature conditions
- Lifetime warranty

## CMVRS

- Stores video onsite - great for locations with limited bandwidth or regulatory requirements
- Can support locations with 60+ cameras
- Gain cloud management features, while still storing footage onsite
- Two year warranty

# Ideal Hardware Opportunities



## Eagle Eye Bridge 304

Compact size

Great for new, standard projects



## Eagle Eye Bridge 310

Supports IP and/or Analog cameras

Ability to slowly upgrade cameras



## Eagle Eye Bridge 305

Suitable for outdoor environments

Can withstand extreme temperatures



## Eagle Eye CMVR 520, 620 & 820

Stores video onsite and/or in the Cloud

Suitable for locations with 60+ cameras

# Eagle Eye Managed PoE Switches



- Designed to seamlessly integrate with the Eagle Eye Cloud Security Camera VMS - they work right out of the box.
- Provides faster installations, easier maintenance, and reduced service calls - have a better visibility of your camera operations.
- Allows for remote configuration and management - authorized users can power cycle an individual camera or the entire switch.

## Managed PoE Switches

---

- 5 Port Model
- 8 Port Model
- 16 Port Model
- 34 Port Model

## Additional Information

---

- Class 3 PoE Ports
- 1 or 2 GB Uplinks
- Sturdy Steel Chassis

# Cameras



Eagle Eye Bridges and CMVRs support IP and Analog models from a wide range of manufacturers.

Is your camera compatible with our system? [Click here](#) to find out - search by Make, Model, Firmware, etc.

Eagle Eye is always adding new cameras to our compatibility list. If you're interested in a model that isn't currently available, please contact us.

# Eagle Eye Cameras



DB05, 06 & 07

- Outdoor
- Waterproof
- Bullet



DB08 & 09

- Outdoor
- Waterproof
- Mini-Bullet



DD05 & 06

- Indoor
- Vandal-Proof
- Dome



DM05, 06 & 07

- Indoor
- Vandal-Proof
- Mini-Dome

Datasheets are available with technical specifications.



# Plug & Play



The Eagle Eye Security Camera VMS is a fully managed cloud video surveillance solution that's simple to deploy and easy to use.

Remove the headache around tech specifications when you buy a Bridge or CMVR, a Managed PoE Switch, and your cameras from Eagle Eye.

Eagle Eye and select Hikvision cameras are pre-programmed to work with the Eagle Eye Security Camera VMS - simply plug and play!

# Ideal Customer Profile

- Owner or operator of multiple, geographically distributed locations
- Pain points around the management of those locations
- Bonus: desires to leverage technology to improve business operations



## Key Vertical Markets



- 
- QSR
  - Gyms & Fitness
  - Retail
  - Education
  - Offices
  - Retail Services
  - Warehousing
  - Industrial
  - Residential
  - Etc.

# Kentucky Fried Chicken

## Project Details

Location Count	6
Camera Count	66
Camera Type	IP (Hikvision)
Onsite Hardware	Eagle Eye Bridge 304 & 401  Eagle Eye CMVR 224
Retention Period	14 Days

## Previous Video Solution

Outdated NVR system with old analog cameras

## Problems

- Required driving to each location when owner wanted to view video
- Extremely difficult to access footage after incidents

## Results with Eagle Eye

- Manage multiple locations remotely
- Pull needed video clips with ease from mobile device
- Manage suspicious transactions with PoS integration



# Kentucky Fried Chicken



“I did a lot of research before making my decision, and Eagle Eye Networks definitely gives you the best value for your dollar. My goal is to get all of my restaurants on Eagle Eye’s cloud video surveillance system.”

*Rob Rianna  
KFC Franchise Owner  
8 Locations*

# Planet Fitness

## Project Details

Location Count	9
Camera Count	42
Camera Type	IP & Analog (Eagle Eye & Hikvision)
Onsite Hardware	Eagle Eye Bridge 301 & 410
Retention Period	30 Days

## Previous Video Solution

Outdated DVR system with poor mobile application

## Problems

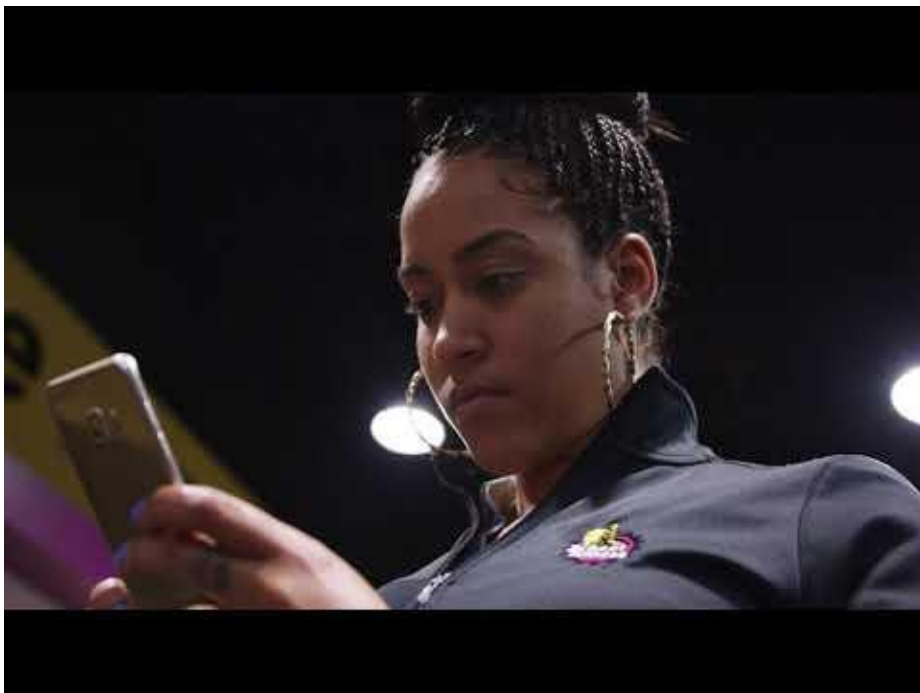
- Unable to view multiple locations at once
- Difficult to manage access for multiple users

## Results with Eagle Eye

- Customized layouts for managing multiple locations on one screen
- Easily grant access to employees and manage user permissions
- Footage is used for employee training



## Planet Fitness



“I’m able to see all of my clubs at once, ensuring brand consistency and the highest level of customer service. I can also grant access to my assistant managers, which they can view on their phones.”

*Joe Bernatowicz*  
*Planet Fitness Franchise Owner*  
*11 Locations*

# Mobile Police Department

## Project Details

Location Count	1
Camera Count	24
Camera Type	IP (Hikvision & Axis)
Onsite Hardware	Eagle Eye Bridge 304 & 305
Retention Period	30 Days

## Previous Video Solution

Outdated DVR system with various cameras connected to it

## Problems

- Previous system at risk due to emerging cybersecurity threats
- Difficult to manage multiple cameras on one system

## Results with Eagle Eye

- Information is protected via Eagle Eye Camera Cyber Lockdown
- Enabled to perform license plate recognition
- Easily view footage from patrol cars





## Mobile Police Department



“Eagle Eye is video in the cloud. It allows us the easiest connectivity at the real-time crime center and the joint operations center. Eagle Eye’s encrypted, secure connection is also a huge selling point for us.”

*Kevin Levy*  
*MPD Cyber Intelligence Unit*

# Domino's Pizza

## Project Details

Location Count	6
Camera Count	66
Camera Type	IP (Hikvision)
Onsite Hardware	Eagle Eye Bridge 304 & 401  Eagle Eye CMVR 224
Retention Period	14 Days

## Previous Video Solution

Outdated DVR system at each individual location

## Problems

- Previous solution no longer effective due to rapid expansion
- No way to manage multiple locations on one screen

## Results with Eagle Eye

- Ability to manage 22 restaurants from one account
- View all registers and kitchens at once with custom tagging feature
- Improving operations with analytics



## Domino's Pizza



"It's important for multi-unit operators to have eyes and ears in every location. Eagle Eye gave us that opportunity, monitoring our restaurants for safety, security, and operations. Having our data in the cloud is also an enormous help."

*Brent Medders  
Domino's Franchise Owner  
22 Locations*

# Ladd-Peebles Stadium

## Project Details

Location Count	1
Camera Count	45
Camera Type	IP (Hikvision)
Onsite Hardware	Eagle Eye Bridge 410
Retention Period	30 Days

## Previous Video Solution

Outdated NVR system with three PTZ cameras

## Problems

- Inadequate coverage of entire facility
- Unable to identify culprits of ongoing theft and vandalism

## Results with Eagle Eye

- Able to grant police access to all cameras during large events for added security
- Visibility into all areas of the stadium
- Theft and vandalism has stopped



## Ladd-Peebles Stadium

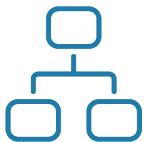


"The Eagle Eye system has been a great tool for us. We've not only seen a decrease in security incidents, but we've used the video to control crowds and apprehend individuals. Our facility is more security, both during events and when it's closed. "

*Vic Knight*  
*Stadium Manager*



## Dealer Resources



- 
- Pilot & Lead Programs
  - References & Support
  - Sales & Technical Training
  - Success Stories & Video Testimonials
  - Whitepapers

[ACCESS HERE](#)

(NOTE: a Dropbox account is needed for many of these links)



## Questions? Contact Us

### **Sales Team**

+1-512-473-0500

[sales@EagleEyeNetworks.com](mailto:sales@EagleEyeNetworks.com)

[www.EagleEyeNetworks.com](http://www.EagleEyeNetworks.com)

### **Tech Support**

+1-512-473-0501

[support@EagleEyeNetworks.com](mailto:support@EagleEyeNetworks.com)

[support.EagleEyeNetworks.com](http://support.EagleEyeNetworks.com)